

Canterbury

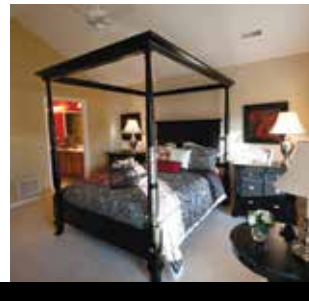
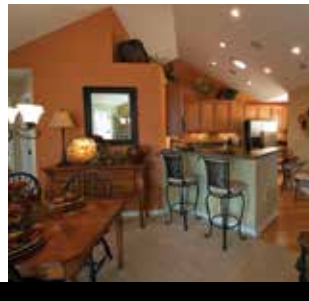
3 BEDROOMS OR 2 BEDROOMS AND A DEN
2 BATHROOMS | 2 CAR GARAGE



Exterior Features

Exterior materials have been carefully selected to create a high quality appearance and minimize future maintenance.

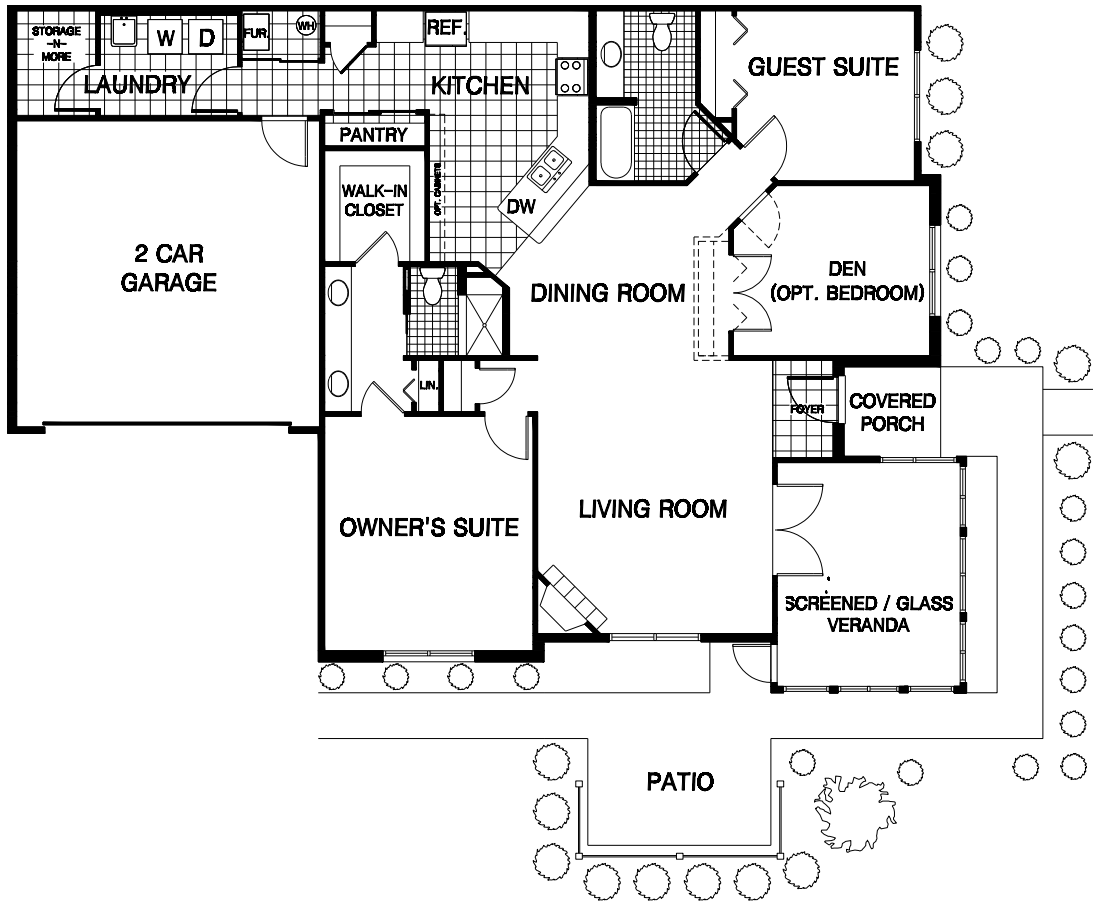
- High Pitched Roofs
- Exterior Elevations with Brick & Siding
- Private Fenced Patio
- Two Car Attached Garage
- Custom Paneled Garage Doors with Windows
- Low-E Windows & Screens
- Beautiful Landscape Package



A Weaver Master Builders, Inc. Company

Canterbury

3 BEDROOMS OR 2 BEDROOMS AND A DEN
2 BATHROOMS | 2 CAR GARAGE



Interior Features

- Entry Foyer with Ceramic Tile Flooring
- Raised Panel Doors & White Trim Throughout
- French Doors from Living Room to Veranda
- Moen Faucets in Kitchen & Baths
- Lever Door Handles
- All Closets include Ventilated Shelving
- Den with Double Door Entry that may be Converted to a Third Bedroom with Private Closet
- Quality Stain Resistant Carpeting
- Veranda with Vaulted Ceiling & Insulated Windows
- Pull Down Stairs to Lighted Attic Storage Area above Garage
- Pre-Wired for Cable Television in Living Room & Bedrooms
- Ceiling Fans
- Gas Fireplace



A Weaver Master Builders, Inc. Company